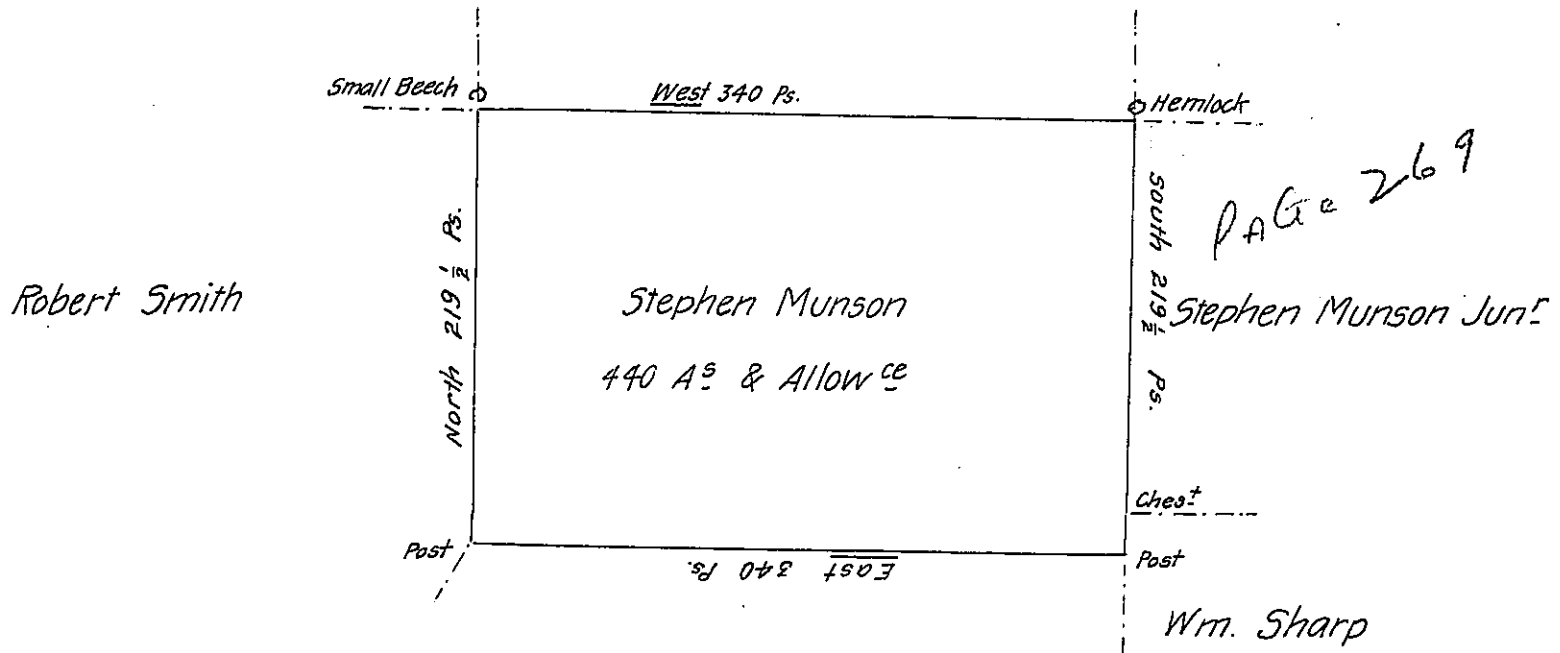


UPSIDE-DOWN

James Sumerlin



John Munson

A Draught of a Tract of land situate in the County of Luzerne
 Containing Four hundred & forty Acres & Allow^{ce} of six P.C. for roads &c.
 Surveyed the 10th of August 1793 on a Warrant to Stephen Munson dated
 the 13th of August 1792 - Taken from the field notes of Joseph J. Wallis then
 Deputy Surveyor

Henry Donnel D.S.

To Danl Brodhead Esq^r
 Surveyor General

Certified this 8th feby 1802

Tho^s Sambourne D^y S^r

IN TESTIMONY that the above is a copy of the original remaining on file in
 the Department of Internal Affairs of Pennsylvania, made
 conformably to an Act of Assembly approved the 16th day of
 February, 1833, I have hereunto set my Hand and caused
 the Seal of said Department to be affixed at Harrisburg,
 this first day of December 1905

[Signature]
 Secretary of Internal Affairs.